



**LOGICON**  
TECHNOSOLUTIONS

Automation Beyond Imagination

[www.logicontech.com](http://www.logicontech.com)

**Company Presentation**

# LOGICON TECHNOSOLUTIONS PVT. LTD.

Industrial Automation, Manufacturing IT and Robotics Solutions Provider



**Recognised  
System Integrator**

A ROCKWELL AUTOMATION PARTNER



- **Founded in 2004**
  
- **Business Divisions**
  - Industrial Automation
  - Manufacturing IT
  - Robotics & Vision
  
- **ISO 9001:2015 Certified**
  
- First Recognized System Integrator [RcSI] in Asia Pacific Certified for 3+ disciplines of Rockwell Automation
  - Control
  - Process
  - Information + EMI



# Numbers in Glance

- **USD 5+ Million Revenue** for Financial Year 2019-20
- **14% YoY Growth** since Inception
- **500+ Customers** in **15+ Countries**
- **90+ Employees**



## OUR VISION

To be globally recognized as the most ethical and dependable provider of Control Automation, Information & Engineering solutions



## OUR MISSION

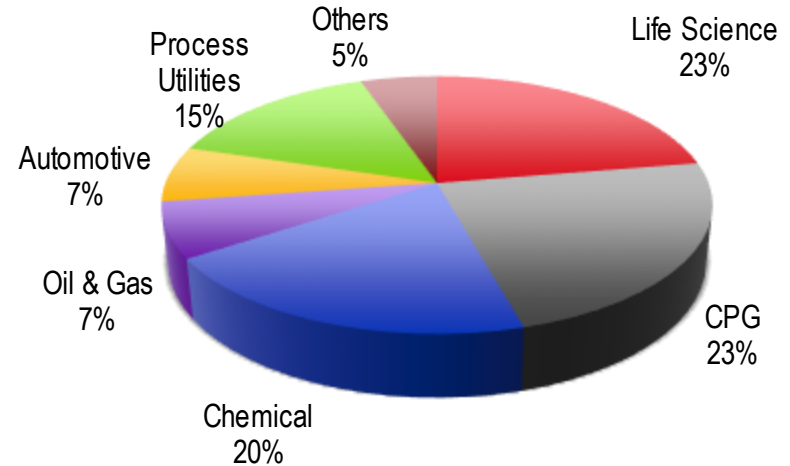
To be a global leader providing optimized control Automation, Information and Engineering Solutions that run safely and reliably



## OUR VALUES

- Excellence in Service
- Customer Focus
- Passionate and Determined
- Build a positive team and Family spirit
- Build open and honest relationships with communication
- Community

## INDUSTRY-WISE REVENUE



- Life Science
- CPG
- Chemical
- Oil & Gas
- Automotive
- Process Utilities
- Others

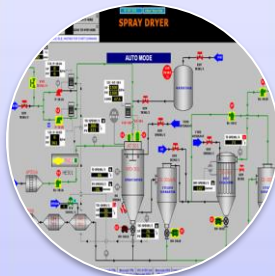
**Other Industries Include: Fibers, Paper & Cement**

# Logicon Domain Expertise



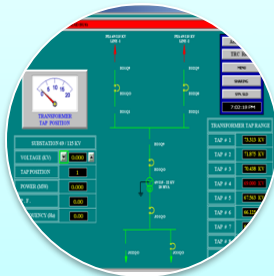
## Batch Solutions

- API Reactor Automation
- Solvent Transfer Systems
- Lube Oil Blending
- Fertilizer Reactors
- Sigma Mixers
- Rubber Chemicals
- Personal Care Product Mixers



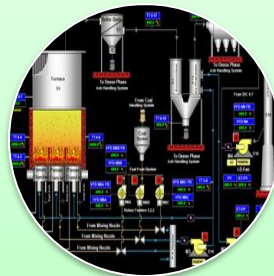
## Process Control

- Process Dryers
- VTD
- RCVD
- RVPD
- FBD
- Spray Dryers
- Distillation
- Evaporators
- Extruders
- Turbine Controls



## Power & Energy Management

- Load Shedding
- Load Sharing
- Grid Synch
- Captive Power Synch
- Energy Monitoring
- Reports & Analysis



## Boiler & Utility Control

- BMS HVAC Controls
- Burner Management
- Boiler & Drum Controls
- Chiller Automation
- Compressors Automation
- DM/RO Plant Automation
- Waste Water Automation



## Bulk Material Handling

- Coal /Ash Handling Plants
- Stacker Controls
- Reclaimer Automation
- Wagon Tippers
- Conveyor Automation
- Ship Un-loaders



## Manufacturing Intelligence

- Electronic Data Logging & Monitoring System
- OEE
- SPC – CP/CPK
- Electronic Batch Record System
- Historian
- Downtime Analysis
- Quality Information
- Track & Trace

# Major PlantPax DCS Projects Executed

## NOCIL

- Industry: Chemical
- Project Value: USD 500k
- Total IOs: 4500+
- Year: 2019
- Hazardous Plant Manufacturing Rubber Chemical

## Indofil

- Industry: Agro Chemical
- Project Value: USD 1.25 Million
- Total IOs: 3000+
- Year: 2010
- Hazardous Plant Manufacturing Agro Chemical, Rockwell Make IMCC Panels

# PlantPax

## MSF Sugar Australia

- Industry: Coagen Power Plant
- Project Value: USD 300k
- Total IOs: 2000+
- Year: 2019
- Captive Power Plant Manufacturing

## Cipla

- Industry: Life Science
- Project Value: 4 DCS Packages – USD 1.8 Million
- Total IOs: 2500+
- Year: 2017-2020
- API Plant Hydrogenation Reactor, Solvent Transfer System and Downstream Equipment Integration

# Factory Digitization – Industry 4.0 Projects Executed

## Factory Digitization / IIoT Solutions

### Production Efficiency

- Auto Capture of Machine Downtimes directly from Machine Controllers
- Real-time Machine-wise Overall Equipment Efficiency
- On demand Information Access on Web & Mobile

### Product Quality & Genealogy

- Electronic Batch Record along with Raw Material Traceability and E-Kitting
- Statistical Process Control for Process & FG Quality Parameters
- Online Data Logging as per PCRO standards to calculate wastage/giveaways
- Vision Inspection, Live Data Analytics and Real-time Culprit Notification

### Utilities

- Online Utilities Data Monitoring & Consumption Reports per Unit produced
- Critical Utilities Parameters Data Capture and Analytics
- Notification in case of higher usage than regular

### Logistics

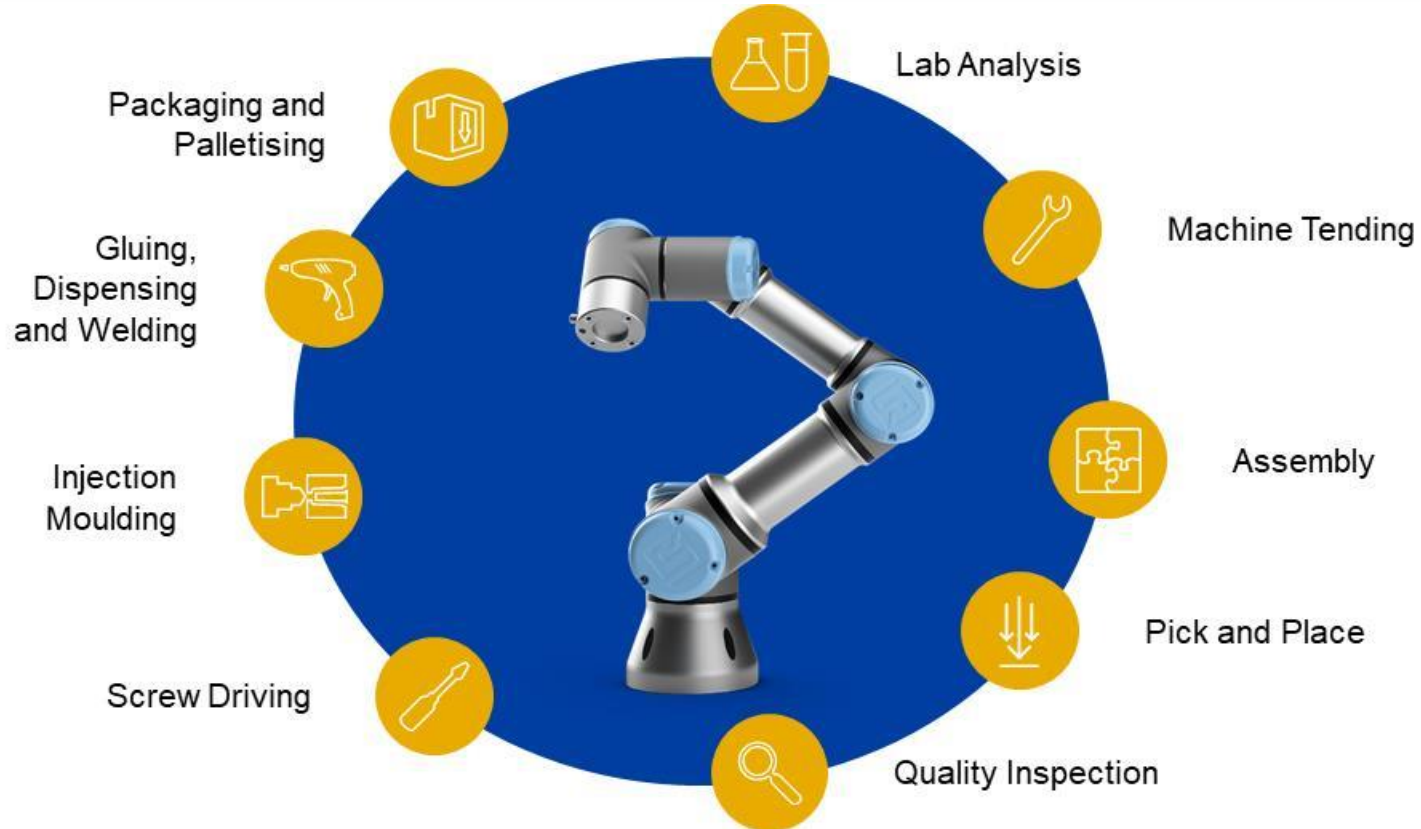
- Just In Time – Lineside Material Pull
- Warehouse & Factory Store Inventory Management
- Material Transfer Information with Location Tracking

### Maintenance, Safety and Training

- Predictive Maintenance and Alerts
- On demand Graphical Machine SOP Guidance with Safety Audits
- E-workorder and Paperless Processes



# Robotics Applications



# Our Delivery Model



## Design

- Study and Survey
  - ✓ Validation
  - ✓ Estimations
  - ✓ Feasibility
- Recommendations
  - ✓ Standardization
  - ✓ Equipment Selection
  - ✓ Architecture
  - ✓ Configuration
  - ✓ Sizing



## Detail

- Detailed Engineering Documents
  - ✓ QA Plan
  - ✓ System Design
  - ✓ Network Design
  - ✓ Electrical Drawings
  - ✓ GA Drawings
  - ✓ Bill of Material
  - ✓ P&ID to Control Schematics
  - ✓ Loop Drawings
  - ✓ Instrument Data Sheets
  - ✓ Process Graphic Design
  - ✓ Factory Acceptance Procedure



## Deliver

- Software Development
  - ✓ Logic Development
  - ✓ HMI Development
  - ✓ Reports
  - ✓ Simulation Testing
- Hardware Assembly
  - ✓ Power Up Testing
  - ✓ Load Testing
- Factory Acceptance Test
- Documentation
- Site Supervision & Installation
- Commissioning
- Annual Support
- Remote Expert Support

# Leadership Team



## H.S. Pansare

Founder, Managing Director

- 35+ years experience in Control & Automation, Proven Leader in Design, Development, Delivery & Organizational Development.
- First Generation Entrepreneur, Provides Organizational & Financial Leadership



## Vishal Pansare

Business Manager - Manufacturing IT Business

- 10+ years in Manufacturing IT, MES, Control Automation & Product Development
- Responsible for Process Improvement, Manufacturing IT Business Development & Client Engagement



## GS Nageswara Rao

Chief Operating Officer – South India Region

- 35+ years experience in Controls, Process in various industries viz. Power, Sugar and Utilities
- Leading overall South India Region Business including Client Acquisition, Engagement, Business Development



## Avinash Tote

Executive Director, Head of Operations & Client Engagement

**CCS Certified**

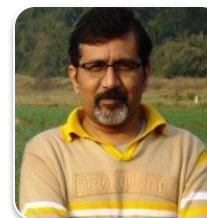
- 21+ years in Controls, Information, Automation Solution design, Delivery, Operations & Consulting.
- Provides Client facing and engagement leadership, Overall responsible for Client Acquisition and Business development



## Prasad Kulkarni

Robotic & Automation Division

- 26+ years experience in Industry. Worked in leadership role in PARI, TAL in Robotic and Automation division.
- Leading Robotic Division of Logicon. Having Experience in Material Handling, Aerospace, Automatic car parking, SPM Manufacturing. Assembly automation



## Umesh Joshi

Head of Engineering & Project Delivery

- 24+ years experience in Electrical Controls & Automation Design, Project Delivery & Consulting.
- Provides Over all Technical Leadership for solution design & delivery, Responsible for Detailed Engineering & Project Execution process & standardization.

# Notable Customers



# Esteemed End Users

- ❑ Hindustan Unilever Ltd.
- ❑ Castrol India Ltd.
- ❑ Indofil Chemicals
- ❑ Pudumjee Pulp & Paper Mills
- ❑ Cipla Ltd.
- ❑ Gujarat Flurochemicals
- ❑ Gulbrandsen Technologies
- ❑ Huber Chemicals
- ❑ United Phosphorous Ltd.
- ❑ LakmeLever Ltd.
- ❑ ESSAR
- ❑ Coca Cola Ltd.
- ❑ Orient Cement
- ❑ Deepak Fertilzers
- ❑ Syngenta Ltd.
- ❑ Reliance Industries
- ❑ Pepsico India
- ❑ Aditya Birla Group
- ❑ Savita Oils
- ❑ Mosarbaer Power
- ❑ Pidilite Industries
- ❑ Century Enka Ltd.
- ❑ Global Chemicals, UAE
- ❑ Rajashree Polyfils
- ❑ DSM Engineering Plastics
- ❑ Gulf Oil, Dubai
- ❑ Vasavadata Cements
- ❑ NOCIL
- ❑ OSCAR Lubricants, UAE
- ❑ Mahindra & Mahindra
- ❑ Godrej Industries Ltd.
- ❑ Thai Carbon Black, Thailand
- ❑ Alexandria Carbon, Egypt
- ❑ Supreme Petrochemicals
- ❑ Cosma Magna
- ❑ Pernod Ricard

# Esteemed OEMs

- ❑ Thermax Ltd.
- ❑ Thyssenkrupp Industries.
- ❑ Sterling & Wilson
- ❑ Atlas Copco India Ltd.
- ❑ Forbes Marshall
- ❑ Sitson India Ltd.
- ❑ ION Exchange International
- ❑ ION Exchange, Malaysia
- ❑ Wipro Waters India Ltd.
- ❑ Mojj Engineering
- ❑ Capital Controls
- ❑ Eisenmann India
- ❑ Chemtrols Industries
- ❑ Lanco Solar
- ❑ AVM Systech
- ❑ Alfa Engineering
- ❑ Mahindra Conveyers
- ❑ Pennar Enviro
- ❑ Aquachill India
- ❑ Snehal Engineering & AC
- ❑ Comp Engineering
- ❑ Chemithon India
- ❑ Jalrasayni
- ❑ Advanced Ventilation
- ❑ Alliance Engineering
- ❑ Sangola Power

# Global Projects Executed

- ❑ New Heaven Chemicals, USA
- ❑ MSF Sugar, Australia
- ❑ Atlas Copco, USA
- ❑ Ion Exchange JuronG, Singapore
- ❑ Lockheed Martin, USA
- ❑ APAR, UAE
- ❑ OSCAR Lubricants, UAE
- ❑ Unilever, USA, Saudi Arabia and Bangladesh
- ❑ Alexandria Carbon, Egypt
- ❑ JJC, Phillipines
- ❑ Lamson Power Corporation, Phillipines
- ❑ Tanjumin Power Plant, Malaysia
- ❑ Gelaphu, Bhutan
- ❑ Jurong Aromatics Corporation, Singapore
- ❑ Berg Energy Solutions, Indonesia
- ❑ Ghana Exploration and Petroleum, Africa
- ❑ Regane Nord Development Project, Algeria
- ❑ ZADCO, UAE
- ❑ Jimah Power Plant, Malaysia
- ❑ New International Airport ADNOC, Abu Dhabi
- ❑ Ion Exchange, Pmalaysia
- ❑ Beximco Pharma, Bangladesh
- ❑ Hitech Controls, USA
- ❑ OLAM International, Vietnam
- ❑ CMC Limited – Stafford, USA

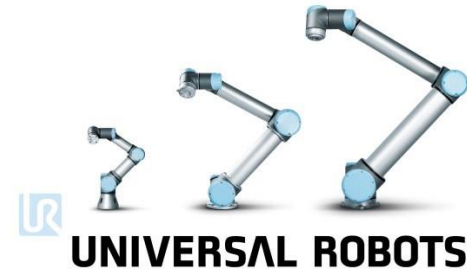
- Rockwell Automation – System Integrator



- Baumer Sensors and Vision – System Integrator



- Universal Robots – Distributor



- Microsoft Action Pack Partner



# Awards & Certificates



## PROJECT COMPLETION CERTIFICATE

This is to certify that M/s Logicon Technosolutions Pvt. Ltd., Pune has successfully designed, installed & commissioned Total Turnkey Instrumentation & Rockwell Automation make Process Automation system for our Mancozeb Plant at our Dahej SEZ site against our order no's

(850151 DTD. 24.11.2008 Rs. 186,00,000/-, 850152 DTD. 24.11.2009 Rs. 212,97,000/-; 850409 DTD.04.06.2009 Rs. 13,50,000/-; 890060 DTD.17.06.2010 Rs. 43,25,250/-; 890061 DTD. 17.05.2010 Rs. 55,38,500/-; 890073 DTD. 17.05.2010 Rs. 99,91,400/-)

The Scope of supply & Installation involved Design Supply, Installation & commissioning of following

- Rockwell Automation make Control Logix & FT View SE HMI based Process Automation system with approx. DI-652 nos., DO-426 nos., AI-296 nos., AO-48 nos.
- Field Instruments (Pressure Tx, Temperature Tx, Mass Flow Meters, Level Tx, DPT's, pH Tx, Local gauges etc. – Total Qty. 300Nos.s approx.
- Field Control Valves (Ball Valves, Butterfly Valves, Globe Valve's etc. – Total Qty. – 200Nos.s approx.
- Rockwell Automation based Intelligent MCC Panels – Approx. 450feeders.
- Total field erection hardware viz. Piping, tubing, Cabling, Cable trays, Air Headers, Blind valves, ferrules, Glands, lugs etc.

### Key Features & Deliverables are:

- Control-Logix based Redundant Control system & communication network extended throughout the Plant for integration with field devices viz. Remote I/O's located in Hazardous (Zone-1) area as well as safe area.
- Integrated MCC based on Intelligent MCC Concept with no hard-wiring between MCC & Control system.
- Weighing system integrated with control system on Digital communication.
- Architecture is based on HART enabled analog I/O modules, enabling the system to tap the intelligence of field devices.
- Special Rockwell make intrinsically safe I/O modules (Flex Ex series) installed in Zone-1 area without requirement of any special panels.
- Integration of plant utilities (Energy Meters, Compressors, boilers etc.)

The system is successfully commissioned & is in operation since commissioned.



PLANT : 2-A,  
SEZ Dahej, Tal. Vagra, Dist. Bharuch - 392 130 (Gujarat)  
Tel. : 02641-304100, 304101 Fax : 02641-304128  
E-mail : [indofil@indofil.com](mailto:indofil@indofil.com) Website : [www.indofil.com](http://www.indofil.com)

REGD. OFFICE : Kalpataru Square,  
4th Floor, Kondivita Road, Off Andheri-Kurla Road,  
Andheri (East) Mumbai - 400 069 (Maharashtra)  
Phone : 022 - 69573737, 34565003



## TO WHOMSOEVER IT MAY CONCERN

This is to certify that M/s Logicon Technosolutions Pvt. Ltd, Pune has designed and commissioned Allen Bradley PLC based Power & Load Management system using PLC 5/40C with Control Net hot backup system incorporating the following features.

1. TG-TG synchronization for 4 TG sets including all Incomers & Tie-Breakers, using LSM auto synchronization.
2. TG to GRID synchronization using LSM auto synchronization.
3. Power Management of Incomers (Sources) using Allen Bradley Power Monitor's
4. Manual Load Sharing.
5. Auto Load shedding based on priority & crash load shedding for all the TG's
6. Crash Load Shedding for "GRID FAIL" case
7. Opening and closing facility for all power flow & Load Breakers.
8. Energy management system using power meters on RS485 Modbus RTU communication Network.
9. Monitoring & logging of all electrical parameters, Trending, Alarming & Report generation on SCADA
10. System commissioned on May 2009 and working satisfactory

Morris Ghobrial

DGM (Elect.)  
Alexandria Carbon Black Co. SAE  
Amreya, Alexandria,  
Egypt.

# Awards & Certificates

**LOGICON**  
TECHNOSOLUTIONS

Automation beyond Imagination



## THAI CARBON BLACK PUBLIC CO., LTD.

HEAD OFFICE: 100/100 PRAJAI, 10<sup>TH</sup> FLOOR,  
BANGKOK 10000, THAILAND

สำนักงานใหญ่ : ชั้น 10 ถนนพหลโยธิน 10330  
กรุงเทพฯ 10330  
โทร : 02-2557450-54

TEL : 02-2557450-54 FAX : 02-2557451-55

โทรสาร : 02-2557451-55



### TO WHOMSOEVER IT MAY CONCERN

This is to certify that M/S Logicon Technosolutions Pvt Ltd, Pune has successfully designed and commissioned Allen Bradley PLC systems using 540B processor incorporating the following features.

1) TG-TG synchronization for 4 TG sets.  
Auto / Semiauto / Manual.

2) TG to grid synchronization.  
Auto / Semiauto / Manual.

3) Monitoring and logging of all electrical parameters on Display server and client view from various load stations with alarming and report generation facility.

4) Load sharing of 4 TG sets with Grid in auto mode.

5) Load on/off switching control.

*doje*  
Sr Vice President (Engineering)  
Thai Carbon Black Public Company Ltd.  
Anghong,  
Thailand



## National Peroxide Limited

(As ISO 9001 : 2008 Company)

VILLAGE VADAVLI, N.R.C. ROAD, POST MOHANE, KALYAN - 421102.

Tel. Mktg. : 0251-2270 676/678  
Fax : 0251-2270 669  
Mobile/Store : 0251-2270 655  
Fax : 0251-2270 671  
email : npl@naperol.com

## C E R T I F I C A T E

This is to certify that M/s Logicon Technosolutions Pvt. Ltd. LOGICON is providing continuous Technical Support on all Allen Bradley Systems Also Designed, Developed & Commissioned Project "Automatic De-mineralized Water Plant" includes MMF, UF, RO & MB" in October, 2012.

Following Allen Bradley Hardware's, Software's & Communication Protocols used:

1. PAC (Programmable Automation Controller) System, CompactLogix L23E-QB1 Controller (Catalog No. 1769-L23E-QB1), Software Used RS Logix 5000 Professional (Version 18.01)
2. SCADA (Supervisory control & Data acquisition) System, Software Used FactoryTalk View9 Site Edition 6.00.00.16
3. HMI (Human Machine Interface) System, Panel View Plus 1000 (Catalog No. 2711P-T410C4D8), Software Used FactoryTalk View9 Machine Edition 6.00.00.16
4. Communication Protocol used DeviceNet™, 1769-SDN (DeviceNet™ Scanner) & 1734-ADN (DeviceNet™ Adapter)
5. Digital Input Modules, Catalogue No. 1734-IB8 (13 Nos.), Digital Output Modules, Catalogue No. 1734-OB8 (14 Nos.), Analog Input Modules, Catalogue No. 1734-IEBC (4 Nos.), Analog Output Modules, Catalogue No. 1734-DEAC (2 Nos.)
6. EtherNet/IP™ used for the Communication between PAC, HMI & SCADA.

This is one of the India's Largest "Automatic De-mineralized Water Plant" includes MMF, UF, RO & MB", capacity 50 M3/Hr & M/s Logicon continuously deliver seamless solutions design, operation incorporating the following Advanced Techniques, Functionality & Features.

1. The operations including 5 Processes Reverse Osmosis I (RO-I), Reverse Osmosis II (RO-II), Multi Media Filtration (MMF), Ultra Filtration (UF) & Mix Bed (MB) Operation including Auto, Manual & Maintenance Operation.
2. Reverse Osmosis I & II Processes including 5 Operations, Process Mode, Flush Mode, CIP Mode, Drain Mode & Off Mode.
3. Multi Media Filtration Process including 8 Operations, Service Mode, Drain Mode, Air Sourcing Mode, Backwash Mode, Rinse Mode & Off Mode.
4. Ultra Filtration Process including 8 Operations, Production Recirculation Mode, Production Once Through Mode, CEB Mode, CIP Mode, Drain Mode, Backflush Mode & Fastflush Mode.
5. Mix Bed Process including 13 Operations, Service Mode, Top Drain Mode, Air Sourcing Mode, Backwash Mode, Alkali Injection Mode, Alkali Slow Rinse Mode, Alkali Fast Rinse Mode, Acid Injection Mode, Acid Slow Rinse Mode, Drain Mode, Air Mixing Mode, Acid Fast Rinse Mode & Off Mode.
6. Trends, Alarms & Report generation of all analog parameters.

M/s LOGICON is a leading Global Control Automation and Information Solutions Provider, delivering seamless solutions that bring tangible business value to the leading organizations around the world. M/s LOGICON is always help customers to improve performance and optimize cost of ownership.

Michael Sequeira

*Michael Sequeira*  
10/05/2013  
Manager (Instrumentation Division),  
National Peroxide Limited, Mumbai  
India.

FACTORY : 44 MOD 1, KUTTHANA-ANGTHONG HIGHWAY, T.ROSA, A. MUANG, ANGHONG, 14000 TEL : 066-091 811 631-5 FAX : 066-091 811 576, 620 200  
โทรสาร : 44 พง 1 066091-01066 066091 066091 14000 โทร : 0351 811 631-5 โทรสาร 0351 811 576, 620 200

REGISTERED OFFICE  
NEVILLE HOUSE, J. N. HEREDIA MARG, BALLARD ESTATE, MUMBAI - 400 001  
TEL : 2261 8071 (7 LINES) FAX : 2268 5866 STD/IND CODE : 022 / 5122

# Awards & Certificates



# Certificates & Appreciation Letters



**Head Office**  
Lamsan Industrial Compound, Brgy. Crossing Simway,  
Municipality of Sultan Kudarat, Maguindanao  
t: (6364) 429 0028  
f: (6364) 429 0026

W: www.lamsanpower.com.ph  
E: contact@lamsan.com.ph

**Manila Office**  
Unit 101 Bonaventure Plaza, Ortigas Avenue,  
Greenhills, San Juan City, Philippines  
t: (632) 661 9183  
f: (632) 661 9181

Date: 26<sup>th</sup> November 2016

Logicon Technosolutions Pvt. Ltd.  
15B/1, D1 Block, MIDC, Chinchwad  
Pune, Maharashtra 411019, India

## Appreciation Letter

**Subject:** APPRECIATION FOR SUCCESSFUL Commissioning, Completion & Good Technical Support for Allen Bradley's (Rockwell Automation) DCS system AT 15MW POWER PLANT, LAMSAN POWER CORPORATION, MAGUINDANAO, PHILIPPINES.

Logicon Technosolutions has provided Allen Bradley's (Rockwell Automation) DCS system AT 15MW POWER PLANT, LAMSAN POWER CORPORATION, MAGUINDANAO, PHILIPPINES. We appreciate the effort put by Logicon Technosolutions & Thermax team for successful Integration & Services.

We would like to truly appreciate the excellent job and dedication to commissioning & Technical support for put forth by Mr. Ganesh Landge, Mr. T. Vimalraj, Mr. Ravichandiran D. & Team Members. Your abilities to motivate to others & play important role in team have resulted in a significant increase the success of the project. As we know that 15MW POWER PLANT was very prestigious International Project of our country to grow in global market. Thus the successful of project belongs to us. We sincerely thank you for the great contribution.

We wish all the best to Logicon Technosolutions Pvt. Ltd & Thermax team. Thank you for the partnership. We look forward for a long term business relationship with M/s Logicon Technosolutions Pvt. Ltd. & Thermax Limited.

Sincerely,

  
Engr. Emerald A. Gabatilla  
Operations Manager  
Lamsan Power Corporation



Awarded To

**Mr. Sowbhagya Ranjan Das. (PLC Engineer-Logicon Technosolutions)**

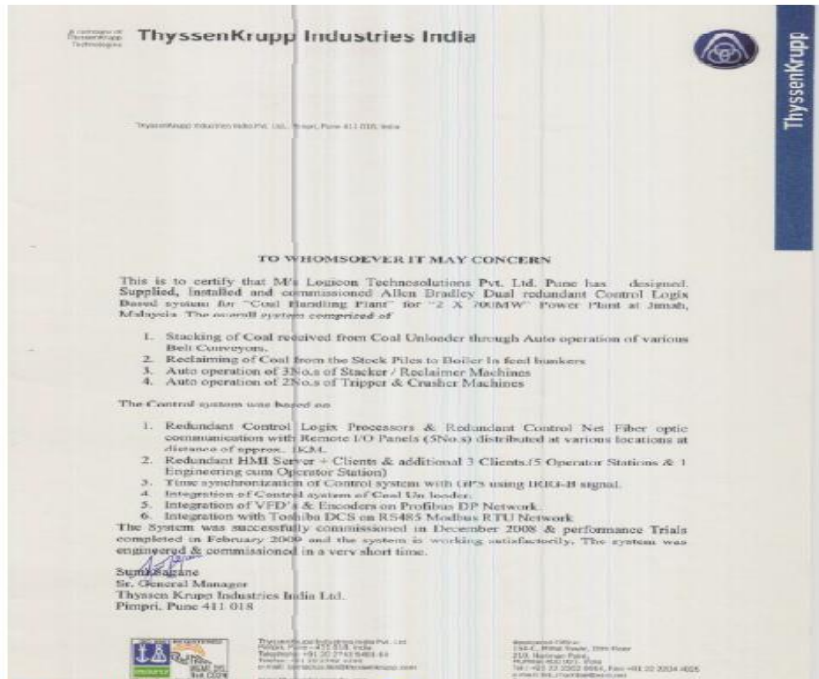
In Recognition of his valuable contribution, dedication and hard work for the  
**safe and successful completion of Installation & Commissioning of Instrument & Plant Air Compressor Package**

at ARZANAH ISLAND under Project - P7330(Contract No. CTE UA120810)

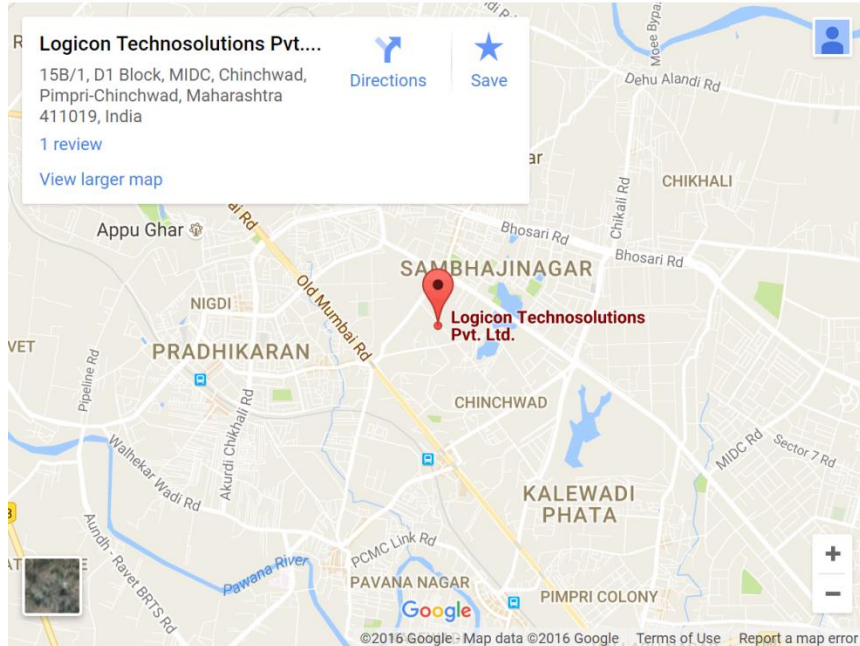
  
Harish Aboobaker Kutty  
SUFEMS- Job Officer

  
Mokhtar-Bourada  
SUFEMS-Manager

# Awards & Certificates



# Contact Details



## Corporate Office :

**Logicon Technosolutions Pvt. Ltd.**  
**Pune, India**

15B/1, D1 Block, MIDC Chinchwad  
Pune – 411019, India

Tel. : +91-20-67306400

Sales: [sales@logicontech.com](mailto:sales@logicontech.com)

Support: [support@logicontech.com](mailto:support@logicontech.com)

## Satellite Locations :

Bangalore, India

Chennai, India

Surat, India

Chandigarh, India

Follow Us On

